

Instructions for cEEG Template

Continuous Monitoring Guide

First Name:	Ref Phys:	End Time:
DOB:	Reader:	EEG #:
MRN:	Hookup Tech:	Credentials:
Room:	EEG Machine:	Archival #:
Medications:		
History:		
Hookup type: Standard Grid Strips		Activation procedures: HV IPS Sleep Dep
Other:		Other:
Additional monitors required:		

1

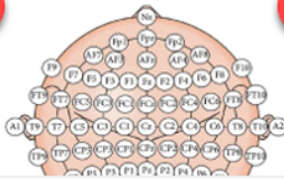
Hook up tech completes this section.

1) Patient information which will be completed on final day of monitoring

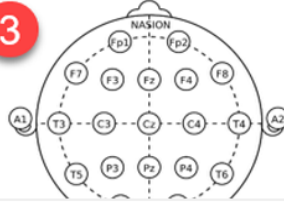
2 & 3) are used for special leads, breakdown prior to set up and skull deformities

Document extra leads, cranial defects, skin breakdown and distance in mm lead was moved.

2



3



2	Continuity	C	NC A	NC S	D	B A	B S	S	Time (AMBS)
	Symmetry	S	A-A	A-F	A-A&F				
	Synchrony	S	AS						
	Amplitude	Avg	Low	Atten	Sup p				
	PDR	Present:			ABS				
	Reactivity	Reactive	NR	Unclear	UNK				
	Variability	Variable	NV	Unclear	UNK				
	Anterior - Posterior gradient	Present	Absent	Unclear					
	Stage II Sleep	Present	Absent	Unclear					
	Periodic Discharges	Absent	Present- see notes below						
	Significant Events	Absent	Present- see notes below						
	Additional Notes	NONE	See below						

3 Notes (Any PD, Events, Technical Issues): If PD or events, ACNS description must be included. If technical issues, must include start & stop times of monitoring.

2

Purple section will be completed by every monitoring tech throughout the course of monitoring.

1) Describes what to place in each section

2) Fill in or circle each section as applicable

3) Fill in as needed

	Stage II Sleep	Present	Absent	Unclear				
	Periodic Discharges	Absent	Present- see notes below					
	Significant Events	Absent	Present- see notes below					
	Additional Notes	NONE	See below					

Notes (Any PD, Events, Technical Issues): If PD or events, ACNS description must be included. If technical issues, must include start & stop times of monitoring.

PD: (G, L, BI, MI) & (PD, RDA, SW)

Events:

Technical Issues:

3

Green section should be completed once daily as each activation procedure or administrative task is completed.

Data processing Activities:

During the course of monitoring the following procedures were accomplished:

Procedure	Date/Time/Tech/Result	Date/Time/Tech/Result	Date/Time/Tech/Result
Uploading/transferring			